

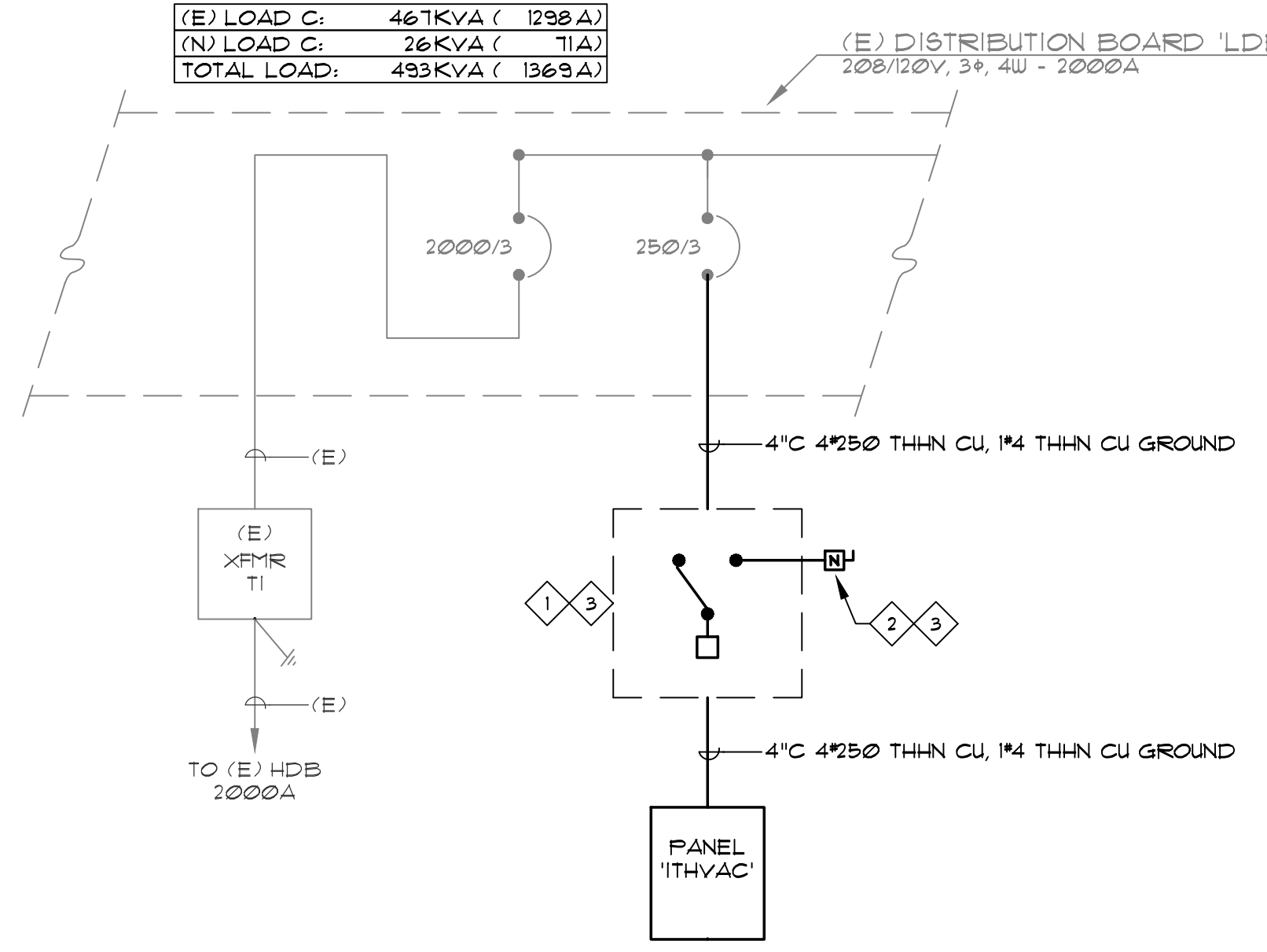
- SHEET NOTES:**
- 400A RATED 208/120V 3PH - 4 POLE MANUAL TRANSFER SWITCH IN NEMA 3R HOUSING.
 - 400A RATED DISCONNECT SWITCH 208/120V 3PH - 4 WIRE IN NEMA 3R HOUSING. PROVIDE 4" THREADED CONDUIT (6' LENGTH) WITH CAP FROM BOTTOM OF DISCONNECT SWITCH FOR TEMPORARY GENERATOR CABLING.
 - THIS WORK TO BE PRICED AS LINE ITEM COST FOR OWNER'S INFORMATION TO THE VALUE OF THE WORK.

TYPE	DESCRIPTION	LOAD	BREAKER	CKT	WIRING	DESCRIPTION	TYPE
RTU-1		2556	100	1	2	30	SPARE
SPARE				3	4	3	SPARE
SPARE				5	6	3	SPARE
SPARE				7	8	3	SPARE
SPARE				9	10	3	SPARE
SPARE				11	12	3	SPARE
SPARE				13	14	20	SPARE
SPARE				15	16	3	SPARE
SPARE				17	18	3	SPARE
SPARE				19	20	20	SPARE
SPARE				21	22	3	SPARE
SPARE				23	24	3	SPARE
SPARE				25	26	3	SPARE
SPARE				27	28	3	SPARE
SPARE				29	30	3	SPARE
SPARE				31	32	3	SPARE
SPARE				33	34	3	SPARE
SPARE				35	36	3	SPARE
SPARE				37	38	3	SPARE
SPARE				39	40	3	SPARE
SPARE				41	42	3	SPARE

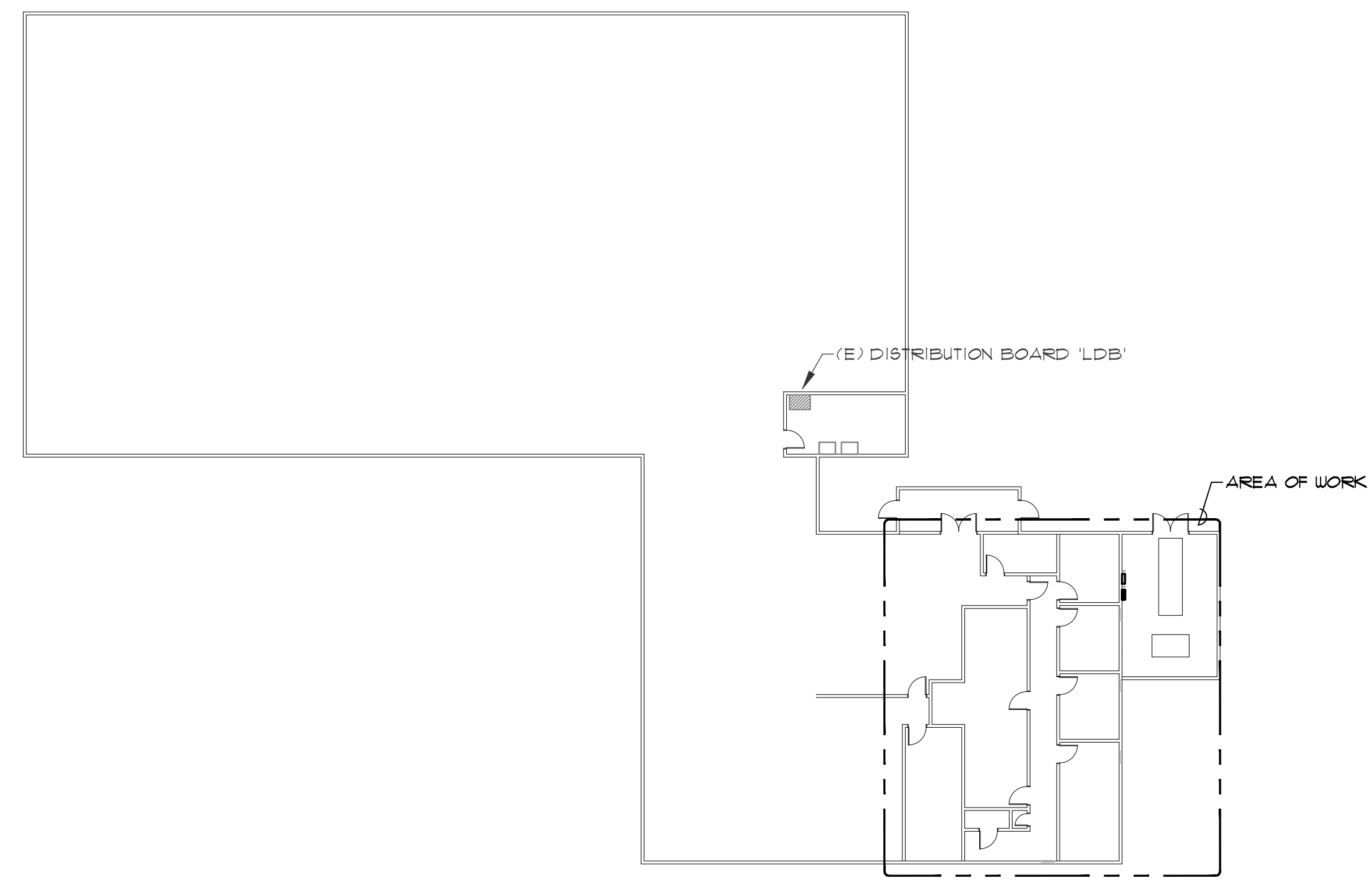
VOLTS: 208/120V, 3φ, 4W
 AMP: 100A 225A 400A
 WIRING: MIB 250A
 LUGS: DBL LUGS
 MTS: SURFACE
 BUSS: COPPER
 DOOR: DOOR N DOOR

NEUTRAL BUS: 100K 200K
 GROUND BUS: STANDARD ISOLATED
 AC RATING: 10K 14K 22K

TOTAL LOAD: 26 KVA (71A)



PARTIAL SINGLE LINE DIAGRAM



ELECTRICAL OVERVIEW PLAN

SPECIFICATIONS

- DEFINITION: THE WORD "PROVIDE" MEANS FURNISH, INSTALL, FEED AND CONNECT WITH ALL ACCESSORIES AND AUXILIARY EQUIPMENT AND OPERABLE INSTALLATION.
- CODES: ALL ELECTRICAL WORK SHALL BE PERFORMED IN ACCORDANCE WITH ALL ADOPTED APPLICABLE CODES AND ORDINANCES.
- COMPLETE INSTALLATION: PROVIDE ALL LABOR, MATERIALS, EQUIPMENT, TOOLS, ACCESSORIES, ETC., NECESSARY TO ACCOMPLISH A COMPLETE ELECTRICAL SYSTEM IN ACCORDANCE WITH THE DRAWINGS AND SPECIFICATIONS.
- GROUNDING: TEST EXISTING SERVICE NEUTRAL FOR ADEQUACY AND FOR GROUND CONTINUITY. GROUND ALL EQUIPMENT AND SYSTEM METALS IN ACCORDANCE WITH ARTICLE 250 OF THE NEC. PROVIDE CODE SIZED EQUIPMENT GROUNDING CONDUCTOR IN ALL FEEDERS AND BRANCH CIRCUIT RACEWAYS. WHERE ISOLATED GROUNDS ARE INDICATED, PROVIDE INSULATED CONDUCTOR.
- CIRCUITING: ALL WIRING SHALL BE IN CONDUIT, CONCEALED EXCEPT WHERE NOTED. ENT WITH DIE CAST SET SCREW FITTINGS MAY BE USED IN DRY, PROTECTED INTERIOR LOCATIONS. PVC SCHEDULE 40 SHALL BE USED BELOW GRADE AT MINIMUM "4", UNWRAPPED RIGID ELBOWS AND RISERS SHALL BE USED FOR ALL THROUGH-ROOF TRANSITIONS AND STUB-UPS. RIGS OR IPC CONDUIT WITH THREADED FITTINGS SHALL BE USED IN ALL LOCATIONS WHERE EXPOSED TO THE ELEMENTS OR SUBJECT TO PHYSICAL DAMAGE. METAL-CLAD CABLE (TYPE MC) MAY BE USED WHERE ALLOWED BY LOCAL JURISDICTION. ALL WIRING SHALL BE IN CONDUIT AND INSTALLED PER NEC ARTICLE 330. TYPE ENT RACEWAY IS NOT ALLOWED. CONNECT RECESSED AND SUSPENDED LIGHT FIXTURES, MOTORIZED AND VIBRATING EQUIPMENT WITH STEEL FLEX. ALL CONDUIT SHALL HAVE FULL CORO IF OTHERWISE EMPTY.
- WIRING: WIRE SHALL BE COPPER UNLESS OTHERWISE NOTED. STRANDED IN SIZES 10 AWG AND LARGER. WHERE ALUMINUM IS INDICATED, WIRE SHALL BE CONTRACTED-STRAND TYPE WITH JOINT COMPOUND AT TERMINATIONS. INSULATION SHALL BE TYPE THW, THW OR THHN (XHHW FOR ALUMINUM). ALUMINUM CONDUCTORS SHALL NOT BE USED IN SIZES SMALLER THAN 1/0 (1000A EQUIPMENT FEEDER) AND WHEN USED SHALL BE TERMINATED IN INSULATED COMPRESSION-TYPE C/JAL FITTING ("MAC-ADAPT" OR EQUAL).
- NEW FUSES AND CIRCUIT BREAKERS: FUSES AND CIRCUIT BREAKERS SHALL BE SIZED PER ACTUAL INTERLATE OF EQUIPMENT BREAKERS. CIRCUIT BREAKERS SHALL BE RATED FOR THEIR RESPECTIVE APPLICATION (i.e. MOTOR CIRCUIT PROTECTOR, GROUND FAULT CIRCUIT INTERRUPTER, ARC FAULT CIRCUIT INTERRUPTER, ETC.). FUSES SHALL BE DUAL ELEMENT, CURRENT, LIMITING, AND SHALL BE INTERCHANGEABLE BETWEEN FRAME SIZES WITH STANDARD FACTORY FUSE HOLDERS. PROVIDE LOCKABLE SPARE FUSE CABINET WITH THREE (3) SPARE FUSES OF EACH SIZE USED.
- EXISTING CONDITIONS: THE DRAWINGS INDICATE NEW WORK TO BE PERFORMED AND DOES NOT PURPORT TO SHOW ALL EXISTING CONDITIONS. CONTRACTOR SHALL VISIT THE SITE PRIOR TO BID AND FAMILIARIZE HIMSELF WITH ALL EXISTING AND PROPOSED CONDITIONS WHICH MAY AFFECT THE COURSE OF HIS WORK. CONTRACTOR SHALL REPORT ALL DISCREPANCIES AND UNACCEPTABLE CONDITIONS TO ENGINEER PRIOR TO BID. NO CHANGE ORDERS WILL BE ALLOWED FOR FAILURE TO COMPLY WITH THIS REQUIREMENT.
- EXISTING OUTLETS: EXISTING OUTLETS AND CIRCUITING NOT IN CONFLICT WITH NEW CONDITIONS SHALL REMAIN. EXTEND OUTLETS TO NEW SURFACES, CAULK AND PROVIDE JUMBO PLATES AS REQUIRED TO PRESENT A SERVICEABLE AND FINISHED APPEARANCE.
- EXISTING SWITCHGEAR: REUSE EXISTING SWITCHGEAR AND PANELS IN PLACE WHERE SO INDICATED. MODIFY AS REQUIRED TO ACCOMMODATE NEW REQUIREMENTS. PROVIDE NEW CIRCUIT BREAKERS AND/OR FUSES AS REQUIRED WITH AIC RATINGS TO MEET OR EXCEED THAT OF EXISTING DEVICES. REARRANGE EXISTING CIRCUITS WITHIN PANELS TO AGREE WITH NEW PANEL SCHEDULES. TRACE AND IDENTIFY ALL EXISTING CIRCUITS ON NEW AS-BUILT PANEL SCHEDULES.
- NEW EQUIPMENT STANDARDS: ALL MATERIALS AND EQUIPMENT SHALL BE NEW AND OF THE HIGHEST QUALITY AVAILABLE ("SPECIFICATION GRADE"). LIGHTING FIXTURES SHALL HAVE CLASS "IP" BALLASTS AND ACRYLIC LENSES. SERVICE EQUIPMENT SHALL BE FACTORY-ASSEMBLED. COMMERCIAL GRADE CONDUIT PER SERVING UTILITY STANDARDS. PANELBOARDS SHALL HAVE BOLT-ON CIRCUIT BREAKERS. WIRING DEVICES SHALL BE SPECIFICATION GRADE WITH NYLON PLATES, IVORY UNLESS NOTED. RAISED STEEL BOX COVERS MAY BE USED IN UTILITY AREAS.
- PERMITS: OBTAIN AND PAY FOR ALL BUILDING AND WORKING PERMITS AND INSPECTION FEES REQUIRED FOR THIS PROJECT.
- DEMOLITION: PROVIDE COMPLETE ELECTRICAL DEMOLITION. REMOVE EXISTING OUTLETS AND EQUIPMENT IN CONFLICT WITH NEW CONDITIONS. EXISTING CIRCUITING WHICH MAY BE ABANDONED IN PLACE IF IN A CONCEALED LOCATION. REMOVE ALL WIRE FROM ABANDONED RACEWAYS. CONTRACTOR SHALL ENSURE CONTINUITY OF EXISTING CIRCUITING PASSING THROUGH DEMOLITION AREAS. EXTEND AND/OR RELOCATE AS NECESSARY. SHIFT OR RELOCATE EXISTING EQUIPMENT AND CIRCUITING AS REQUIRED TO ACCOMMODATE NEW WORK.
- BAI/VALVE: ALL EXISTING EQUIPMENT REMOVED DURING THE COURSE OF THIS PROJECT SHALL BE OFFERED TO OWNER FOR SALVAGE. ANY EQUIPMENT SELECTED BY OWNER SHALL BE DELIVERED TO OWNER ON SITE. ALL REMAINING EQUIPMENT BECOMES THE PROPERTY OF THIS CONTRACTOR AND SHALL BE REMOVED FROM THE SITE.
- TEMPORARY CONSTRUCTION (EQUIP): PROVIDE TEMPORARY ELECTRICAL POWER DISTRIBUTION AND LIGHTING AS REQUIRED FOR ALL TRADES THAT REQUIRE SERVICE DURING THE COURSE OF THIS PROJECT IN COMPLIANCE WITH ALL NEC AND OSHA REQUIREMENTS (OTHER COSTS BY OTHERS).
- LOCATIONS: INDICATED LOCATIONS OF ALL OUTLETS AND EQUIPMENT ARE SUBJECT TO CHANGE. SHIFT/RELOCATE/RECONFIGURE ANY OUTLET, EQUIPMENT OR CONNECTION POINT UP TO 10' AS DIRECTED BY ENGINEER AT NO ADDED COST.
- MATCH EXISTING: EXISTING EQUIPMENT AND SYSTEMS SHALL BE CONSIDERED A MINIMUM STANDARD TO BE MET IF NOT OTHERWISE EXCEEDED BY THESE PLANS AND SPECIFICATIONS. NEW MATERIALS AND EQUIPMENT SHALL MATCH EXISTING IN APPEARANCE AND FUNCTION.
- SUBMITTALS: SUBMIT EIGHT COPIES OF FACTORY SHOP DRAWINGS FOR ALL NEW LIGHTING FIXTURES, SWITCHGEAR, PANELS, MOTOR CONTROL, WIRING DEVICES, ETC. PROPOSED FOR THIS PROJECT. PROPOSED SUBSTITUTIONS SHALL BE EQUAL OR SUPERIOR TO SPECIFIED ITEMS IN ALL RESPECTS. DETERMINATION OF EQUALITY RESTS SOLELY WITH ENGINEER.
- FIRE STOPPING: ALL PENETRATED FIRE RATED SURFACES SHALL BE FIRE SEALED WITH APPROVED U.L. LISTED SEALANTS AS LISTED WITHIN ARCHITECTURAL SPECIFICATIONS. DO NOT EXCEED MAXIMUM ALLOWABLE SURFACE PENETRATIONS DEPENDENT ON RATING OF SURFACES. REFER TO ARCHITECTURAL DRAWINGS FOR DETERMINATION OF PENETRATION LOCATIONS THROUGH FIRE RATED ASSEMBLIES.
- GUARANTEE: THE COMPLETE ELECTRICAL SYSTEM AND ALL PORTIONS THEREOF SHALL BE GUARANTEED TO BE FREE FROM DEFECTS IN WORKMANSHIP AND MATERIALS FOR A PERIOD OF ONE YEAR FROM DATE OF FINAL ACCEPTANCE. PROMPT REPAIR SHALL BE PROVIDED FOR ANY SUBSEQUENT DAMAGE CAUSED BY THE DEFECTS OR REPAIR THEREOF AT NO EXPENSE TO THE OWNER. LIGHT BULBS ARE EXCEPT FROM THIS GUARANTEE, BUT SHALL BE NEW AND UNUSED AT TIME OF FINAL ACCEPTANCE.
- IDENTIFICATION: IDENTIFY ALL EQUIPMENT, SWITCHBOARD CIRCUITS AND ELECTRICALLY CONNECTED EQUIPMENT WITH ENGRAVED NAMEPLATES. NAMEPLATES SHALL BE FASTENED WITH A MINIMUM OF TWO (2) SCREWS. PANEL DIRECTORIES SHALL BE TYPED.
- PANELBOARDS: PANELS SHALL HAVE FLUSH MONO-FLAT TRIM, PIANO HINGED DOORS AND COVER DOOR IN DOOR WITH LOCKABLE MASTER-KEYED FLUSH CATCHES AND BOLT-ON CIRCUIT BREAKERS. FLUSH-MOUNTED PANELS SHALL HAVE EMPTY CONDUITS STUBBED TO ACCESSIBLE ATTIC SPACE: (1) 1" CONDUIT FOR EACH (4) SPARE/SPACE CIRCUITS.
- TAMPERPROOF: ALL EQUIPMENT AND CIRCUITING ACCESSIBLE BY THE PUBLIC SHALL BE DEMONSTRATED TO BE TAMPERPROOF AND VANDAL RESISTANT. OPENABLE DEVICES AND EQUIPMENT SHALL BE PAD LOCKABLE.
- SUPPORTS AND HANGERS: SUPPORT AND ALIGN ALL RACEWAYS, CABINETS, BOXES, BACKBOXES, FIXTURES, AND EQUIPMENT FROM STRUCTURE. SECURE ALL SUPPORTING METHODS BY MEANS OF TOSSEL BOLTS IN HOLLOW MASONRY, EXPANSION BOLTS IN SOLID MASONRY, CONCRETE PRESET INSERTS OR EXPANSION BOLTS IN CONCRETE, MACHINE SCREWS OR BOLTS IN METAL, AND WOOD SCREWS IN WOOD CONSTRUCTION. ALL SUPPORTING SYSTEMS AND COMPONENTS SHALL BE RATED FOR FIVE (5) TIMES THE ACTUAL LOAD.
- ELECTRICALLY-OPERATED EQUIPMENT - FEEDERS AND OVERCURRENT DEVICES COORDINATION: FEEDERS AND OVERCURRENT DEVICES (INCLUDING STARTERS, DISCONNECTS, ETC.) HAVE BEEN DESIGNED BASED ON INFORMATION PROVIDED BY THE RESPONSIBLE CONSULTANT AND/OR DESIGNATED SUPPLIER. PRIOR TO ROUGH-IN COORDINATE WITH THE APPROPRIATE TRADE AND/OR INSTALLER TO DETERMINE THAT THE ACTUAL NAMEPLATE ELECTRICAL REQUIREMENTS MATCH THIS DESIGN. ALL COST REDUCTION, VALUE ENGINEERING, SUBSTITUTION PROPOSALS, ETC. CONCERNING ELECTRICALLY POWERED EQUIPMENT AND SYSTEMS WHICH IMPACT THE ELECTRICAL SYSTEMS OF THIS PROJECT SHALL INCLUDE ALL ELECTRICAL COSTS AND/OR CREDITS ASSOCIATED WITH SUCH PROPOSALS AND SHALL BE COORDINATED AMONGST THE GENERAL CONTRACTOR AND THE SEVERAL AFFECTED TRADES PRIOR TO SUBMISSION FOR REVIEW.
- COORDINATION: THIS PROJECT REQUIRES A HIGH LEVEL OF COORDINATION AND COOPERATION WITH OWNER, ARCHITECT, OTHER TRADES, VENDORS AND SPECIALTY CONTRACTORS. THIS CONTRACTOR SHALL OBTAIN AND STUDY SHOP DRAWINGS OF ALL ELECTRICALLY CONNECTED EQUIPMENT AND SHALL ADJUST POINTS OF CONNECTION, LOCATIONS AND MOUNTING HEIGHTS AS NECESSARY PRIOR TO ROUGH-IN.
- BIDDING: THE CIVIL, ARCHITECTURAL, MECHANICAL, KITCHEN AND INTERIOR DRAWINGS CONTAIN DETAILED DESCRIPTIONS, CIRCUITING AND CONNECTION REQUIREMENTS WHICH ARE PART OF DIVISION 16 RESPONSIBILITIES. THIS CONTRACTOR SHALL NOT SUBMIT BIDS ON THIS PROJECT BEFORE REVIEWING ALL PROJECT DRAWINGS, SPECIFICATIONS AND ADDENDA.
- FIRE ALARM: EXISTING FIRE ALARM SYSTEM TO REMAIN. MAINTAIN IN CONSTANT OPERATION DURING THIS PROJECT. NEW COMPONENTS AND CIRCUITING SHALL BE FACTORY CERTIFIED AS BEING PROJECT-SPECIFIC COMPATIBLE WITH EXISTING SYSTEM. ALL CONNECTIONS TO EXISTING SYSTEM SHALL BE PERFORMED BY FACTORY CERTIFIED TECHNICIAN AND SHALL BE ACCEPTED BY OWNER'S SYSTEM MONITORING AGENCY. THE CONTRACTOR SHALL PROVIDE A COMPLETE FIRE ALARM SYSTEM AND SHALL BE IN FULL ACCORDANCE WITH LOCAL, STATE AND ADA REQUIREMENTS. THESE DOCUMENTS DO NOT INDICATE DEVICES, OUTLETS, CONNECTIONS, AND CIRCUITRY NECESSARY FOR A COMPLETE FIRE ALARM SYSTEM. OBTAIN FIRE MARSHAL APPROVED SHOP DRAWINGS PRIOR TO COMMENCEMENT OF ROUGH-IN. PROVIDE COMPLETE SYSTEM TESTING UPON COMPLETION OF INSTALLATION AND PRIOR TO FIELD ACCEPTANCE BY OWNER.
- ADDITIONAL SYSTEMS AND EQUIPMENT CONNECTIONS: IN ADDITION TO EQUIPMENT POWER FEEDERS AND CONNECTIONS INDICATED ON THE ELECTRICAL DRAWINGS, PROVIDE 120V CONTROL POWER CONNECTIONS TO SMOKE/FARE DAMPERS, VAV BOXES, TEMPERATURE CONTROL AND FIRE ALARM PANELS, DOOR HOLDING/LATCHING DEVICES, ETC. AS INDICATED IN THE PROJECT DRAWINGS AND SPECIFICATIONS AS WELL AS ALL DESIGN-BUILD SYSTEM DRAWINGS.

ITEM	POWER SOURCE	NO. PER 250' CIRCUIT	PROVIDE SMOKE DETECTIONS
FIRE/SMOKE DAMPER	NORMAL (VERIFY)	10	NO
VAV TERMINAL (NO FAN)	EMERGENCY (VERIFY)	1	NO
TEMPERATURE CONTROL PANEL	EMERGENCY (VERIFY)	1	NO
FIRE ALARM PANEL	EMERGENCY	1	NO
DOOR HOLDING/LATCHING DEVICES	EMERGENCY	10	NO

- 24-HOUR OPERATION: CONDUCT WORK TO MINIMIZE DISRUPTION OF OWNER'S ONGOING 24-HOUR OPERATIONS. PROVIDE BARRICADES, NOISE ABATEMENT AND DUST CONTAINMENT MEASURES TO ENSURE THE SAFETY AND COMFORT OF PATRONS, STAFF AND WORKERS. INTERRUPTIONS OF EXISTING POWER OR FIRE ALARM SYSTEMS SHALL BE REPERFORMED ONLY AT SUCH TIMES AS DIRECTED BY RESIDENT ENGINEER. OUTAGES SHALL BE TEMPORARY IN NATURE. EACH SUCH OUTAGE OR OPERATION WHICH MAY POSE RISK OF AN ACCIDENTAL OUTAGE SHALL BE SCHEDULED 48 HOURS IN ADVANCE.

ELECTRICAL SYMBOL LIST

NOTE: THIS IS A MASTER SCHEDULE. NOT ALL SYMBOLS AND/OR ABBREVIATIONS CONTAINED HEREIN MAY APPEAR ON THE DRAWINGS.

FLUORESCENT FIXTURE - RECESSED, LAT-N	FLUORESCENT FIXTURE - RECESSED, FLANGED	FLUORESCENT FIXTURE - SURFACE	FLUORESCENT FIXTURE - SUSPENDED	FLUORESCENT FIXTURE - OPEN STRIP WITH WIRE GUARD	FLUORESCENT FIXTURE - WALL MOUNTED	INCANDESCENT, H.I.D. OR MINI-FLUORESCENT - SURFACE OR RECESSED, PER FIXTURE SCHEDULE	INCANDESCENT, H.I.D. OR MINI-FLUORESCENT - WALL BRACKET	INCANDESCENT, H.I.D. OR MINI-FLUORESCENT - WALL WASH	LOW VOLTAGE INCANDESCENT FIXTURE	CHANDELIER (PROVIDE BX STRUCTURAL BACKING)	FAN (PROVIDE BX STRUCTURAL BACKING)	SPOTLIGHT - J-BOX OR TRACK MOUNTED - TRACK LENGTH AS INDICATED	STEP LIGHT - SURFACE OR RECESSED, PER FIXTURE SCHEDULE	BOLLARD	POLL OR POST - ARM OR TOP MOUNTED CUT-OFF LUMINAIRE	TWIN-LAMP BATTERY PACK - UNSWITCHED, WALL MOUNTED (LOCATE 12" BELOW CEILING UNON)	TWIN-LAMP BATTERY PACK - UNSWITCHED, CEILING MOUNTED, FLUSH OR SURFACE PER FIXTURE SCHEDULE	EXIT LIGHT - FACES AND ARROWS AS INDICATED, UNIVERSAL MOUNTING, UNSWITCHED	EXIT LIGHT - COMBINATION SINGLE FACE, ARROWS AS INDICATED WITH TUN LAMP BATTERY PACK, UNIVERSAL MOUNTING, UNSWITCHED	EXIT LIGHT - LOW LEVEL, 6" - 8" AFF. TO BOTTOM, 4" MAX. OFF DOOR FRAME	LOW VOLTAGE - LED	NEON	FIXTURE, EQUIPMENT ON EMERGENCY	SWITCHES AT 48" TO TOP UN (PER ADA)	SWITCH - SINGLE POLE	SWITCH - DOUBLE POLE	SWITCH - THREE WAY	SWITCH - FOUR WAY	SWITCH - OCCUPANCY TYPE	SWITCH - OCCUPANCY TYPE, CEILING MOUNTED	SWITCH - EMERGENCY	SWITCH - PILOT TOGGLE (CONFIRM LIGHTED POSITION)	SWITCH - KEYED OPERATED	SWITCH - SLIDER TYPE ELECTRONIC DIMMER (WATTAGE RATING AS REQUIRED)	SWITCH - MOMENTARY CONTACT SPDT CENTER OFF UNON	MANUAL MOTOR STARTER, POLES AND HEATERS AS REQUIRED	PHOTOELECTRIC SWITCH - 1500 VA UNON	SIGNALS OUTLET CONNECTION	DEVICES AT 48" TO CENTER LINE UN (PER ADA)	DEVICES MOUNTED IN MULTIPLE UNDER COMMON COVER	DEVICES MOUNTED IN OR ABOVE BACKPLASH	MAXIMUM HEIGHT ON WALLS + 48" TO TOP UN (PER ADA)	DEVICES IN MULTI-COMPARTMENT	RECEPTACLE - DUPLEX	RECEPTACLE - DUPLEX - HALF SWITCHED (TOP HALF)	RECEPTACLE - DUPLEX - INTEGRAL GFCI CIRCUITRY	RECEPTACLE - DUPLEX - ISOLATED GROUND (ORANGE FACE) NEMA 520R/1G	RECEPTACLE - DOUBLE DUPLEX	RECEPTACLE - DOUBLE DUPLEX - INTEGRAL GFCI CIRCUITRY	RECEPTACLE - SPECIAL TYPE (SEE ADDITIONAL NOTES)	RECEPTACLE(S) - CEILING MOUNTED	PLUG MOLD SURFACE RACEWAY SYSTEM (2-CIRCUIT WITH OUTLETS 18" O.C. UNON) MOUNTED ABOVE BACKPLASH UNON	TELEPOWER POLE	SMOKE DETECTOR - LOCAL ONLY, 120V, W/INTEGRAL BATTERY AND ALARM HORN, WALL MOUNT AT 12" BELOW CEILING	SMOKE DETECTOR - LOCAL ONLY, 120V, W/INTEGRAL BATTERY, STROBE, AND ALARM HORN, WALL MOUNT AT 12" BELOW CEILING	OUTLET - CLOCK	OUTLET - TELEPHONE	OUTLET - VOICE / DATA	OUTLET - DATA	OUTLET - TELEVISION	OUTLET - DOOR BELL/BUZZER	OUTLET - MICROPHONE	OUTLET - VOLUME CONTROL (48" TO TOP UN)	OUTLET - SPEAKER 8" COAXIAL W/ BACK BOX AND GRILLE	OUTLET - THERMOSTAT (REB. MECHANICAL DRAWINGS)	TV / SECURITY CAMERA - FIXED (MOUNTING PER PLANS)	TV / SECURITY CAMERA - PTZ - PAN, TILT, ZOOM (MOUNTING PER PLANS)	SWITCHGEAR	PANELBOARD - SURFACE MOUNTED	PANELBOARD - FLUSH MOUNTED	EXISTING / RELOCATED PANELBOARD - SURFACE MOUNTED	EXISTING / RELOCATED PANELBOARD - FLUSH MOUNTED	TRANSFORMER	ENCLOSED CIRCUIT BREAKER	FIRE ALARM EQUIPMENT	COMBINATION FIRE/SMOKE DAMPER	SMOKE DAMPER	SHUNT TRIP STATION	CONTROL STATION AT 48" TO TOP UN (PER ADA)	RELAY	CONTACTOR WITH INTEGRAL HOA SELECTOR	MAGNETIC STARTER, SIZE 1 UN	DISCONNECT SWITCH, 30/3 UNON (IF FUSIBLE (PER NEC) NONFUSIBLE)	COMBINATION STARTER + DISCONNECT, SIZE 1 UNON	VARIABLE FREQUENCY DRIVE	SINGLE-PHASE MOTOR CONTROL ASSEMBLY, HP-RATED SWITCH AND POWER RELAY 20/1 UNON	FULLBOX - SIZE AND LOCATION AS REQUIRED	JUNCTION BOX - SIZE PER NEC REQUIREMENTS	MECHANICAL EQUIPMENT DESIGNATION	MOTOR OUTLET	LIGHTING FIXTURE DESIGNATION: TYPE FI, 120 WATTS	QUANTITY + 3	EQUIPMENT LOAD	STANDBY LOAD	SUPPLY (EXPRESSED IN KVA AND AMP'S)	SHEET NOTE DESIGNATION	FEEDER DESIGNATION (SEE FEEDER SCHEDULE)	CIRCUITING IN WALL OR ABOVE CEILING	CIRCUITING IN FLOOR OR BELOW GRADE	TICS + NO. OF 12 WIRES IF MORE THAN TWO	ISOLATED GROUND WIRE	HOT/NEUTRAL: (4) 12, 3/4" C. TO PANEL A - CIR. 1,3,5	STUB-OUT	CIRCUIT DOWN	COPPER GROUND (SIZE PER PLANS)	MOISTURE SEAL-OFF	30/3	30 AMP / 3 POLE (REPRESENTATIVE)	AL	ALUMINUM	AFB	ABOVE FINISHED FLOOR	AFG	ABOVE FINISHED GRADE	AIC	AMP INTERRUPTING CURRENT	ATB	AUTOMATIC TRANSFER SWITCH	BKSD	BACKBOARD	C	CONDUIT (WITH FULL CORD IF OTHERWISE EMPTY)	CU	COPPER	(E)	EXISTING TO REMAIN	F	FUSE (DUAL-ELEMENT, TIME DELAY)	FBO	FURNISHED BY OTHERS	FFCI	FUSE PER EQUIPMENT NAMEPLATE	GFCI	GROUND FAULT CIRCUIT INTERRUPTER	GND	GROUND	HOA	HAND-OFF-AUTOMATIC	HP	HORSEPOWER	IG	ISOLATED GROUND	K	KCMIL (300 KCMIL + 300K)	NF	NON-FUSED	NIC	NOT IN CONTRACT	NL	NIGHT LIGHT	NS	NOT TO SCALE	(R)	EXISTING TO BE RELOCATED	RS6	RIGID GALVANIZED STEEL	TVSS	TRANSIENT VOLTAGE SURGE SUPPRESSION	UNSW	UNSWITCHED	UPS	UNINTERRUPTIBLE POWER SUPPLY	UN	UNLESS OTHERWISE NOTED	WP	WEATHER PROOF (NEMA 3R)	(X)	EXISTING TO BE REMOVED	XPR	TRANSFORMER
---------------------------------------	---	-------------------------------	---------------------------------	--	------------------------------------	--	---	--	----------------------------------	--	-------------------------------------	--	--	---------	---	---	---	--	--	--	-------------------	------	---------------------------------	-------------------------------------	----------------------	----------------------	--------------------	-------------------	-------------------------	--	--------------------	--	-------------------------	---	---	---	-------------------------------------	---------------------------	--	--	---------------------------------------	---	------------------------------	---------------------	--	---	--	----------------------------	--	--	---------------------------------	--	----------------	---	--	----------------	--------------------	-----------------------	---------------	---------------------	---------------------------	---------------------	---	--	--	---	---	------------	------------------------------	----------------------------	---	---	-------------	--------------------------	----------------------	-------------------------------	--------------	--------------------	--	-------	--------------------------------------	-----------------------------	--	---	--------------------------	--	---	--	----------------------------------	--------------	--	--------------	----------------	--------------	-------------------------------------	------------------------	--	-------------------------------------	------------------------------------	---	----------------------	--	----------	--------------	--------------------------------	-------------------	------	----------------------------------	----	----------	-----	----------------------	-----	----------------------	-----	--------------------------	-----	---------------------------	------	-----------	---	---	----	--------	-----	--------------------	---	---------------------------------	-----	---------------------	------	------------------------------	------	----------------------------------	-----	--------	-----	--------------------	----	------------	----	-----------------	---	--------------------------	----	-----------	-----	-----------------	----	-------------	----	--------------	-----	--------------------------	-----	------------------------	------	-------------------------------------	------	------------	-----	------------------------------	----	------------------------	----	-------------------------	-----	------------------------	-----	-------------

DRAWING INDEX

SHEET NUMBER	SHEET TITLE	PERMIT DATE: 12/23/12	DATE: 12/23/12	SCALE: AS NOTED	JOB NO. L12269	SHEET
E00	SYMBOL LIST, SPECIFICATIONS, PANEL SCHEDULE, PARTIAL SINGLE LINE DIAGRAM AND OVERVIEW PLAN					
E10	DEMOLITION PLAN					
E11	POWER AND SIGNAL PLAN					
TOTAL		3				

REVISIONS	BY

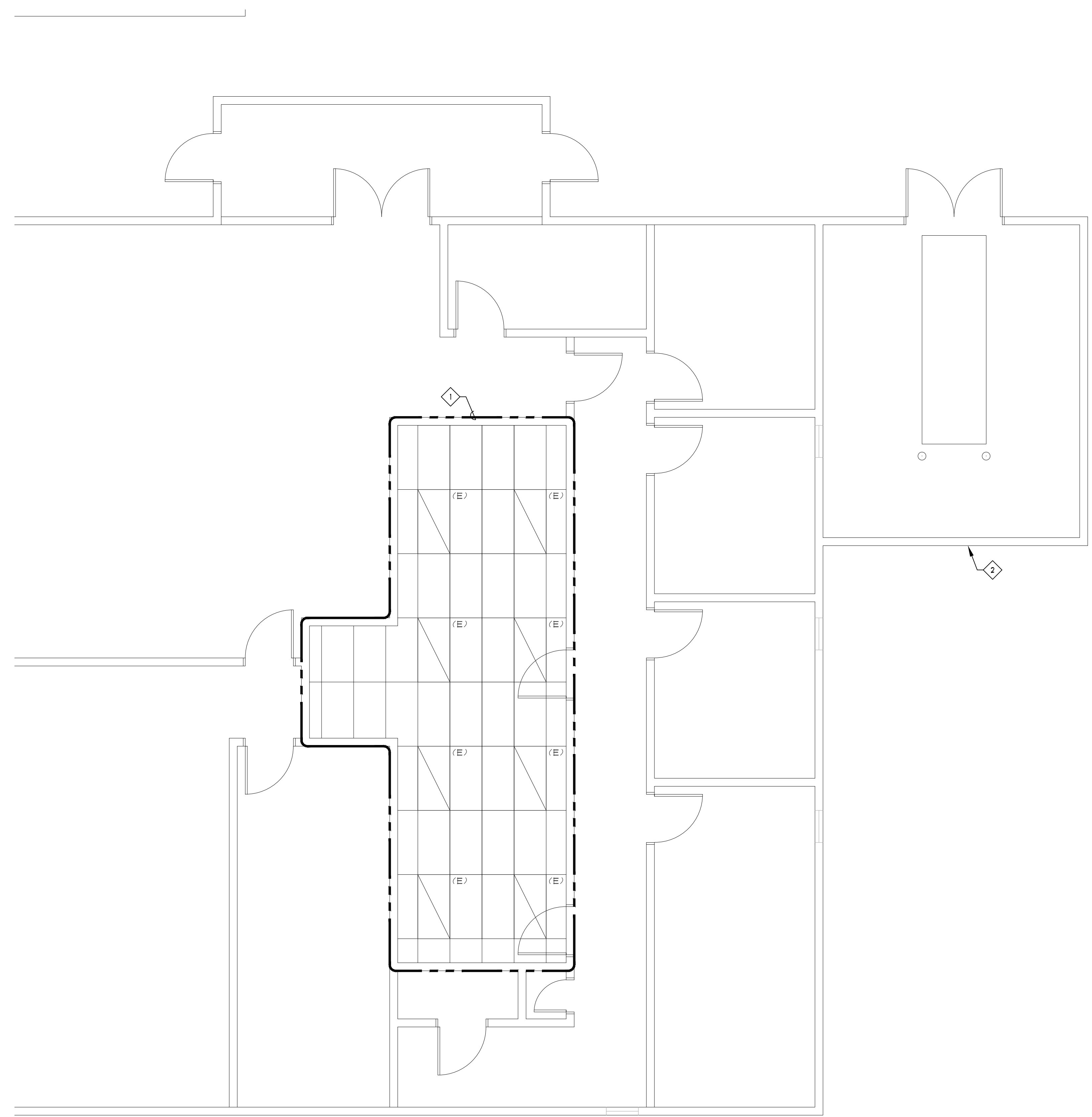
M&A ENGINEERS
 REGISTERED PROFESSIONAL ENGINEERS
 3701 E. Woodland Lake
 Suite 100
 Lawton, Oklahoma 73505
 T: (770) 898-1100
 F: (770) 898-1133
 email: msa@msa.com

REGISTERED PROFESSIONAL ENGINEER
 DAVID W. SALLISAW
 12.03.12

DUCTWORK RECONFIGURATION SALLISAW, OK

SYMBOL LIST, SPECIFICATIONS, PANEL SCHEDULE, PARTIAL SINGLE LINE DIAGRAM AND OVERVIEW PLAN

DRAWN: M&A
 CHECKED: FFE
 DATE: 12/23/12
 SCALE: AS NOTED
 JOB NO. L12269
 SHEET



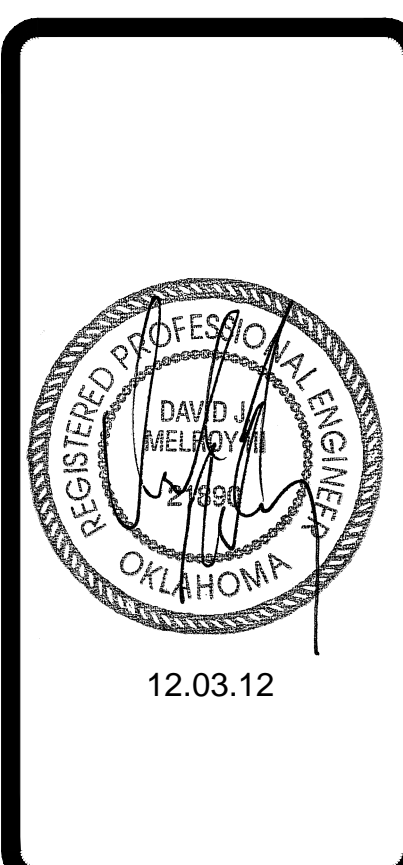
GENERAL NOTES:

1. CONTRACTOR SHALL BE RESPONSIBLE FOR VISITING THE SITE IN ORDER TO BECOME FAMILIAR WITH THE EXISTING CONDITIONS AND THE SCOPE OF THE PROJECT.

SHEET NOTES:

- ◇ CONTRACTOR SHALL REMOVE EXISTING LIGHT FIXTURES AND CIRCUITRY WITHIN THE DEMOLITION ZONE REQUIRED BY THE MECHANICAL CONTRACTOR TO REMOVE EXISTING DUCTWORK, ETC. ABOVE THE CEILING IN ORDER FOR TWO (2) NEW ABOVE CEILING FAN COIL UNITS TO BE INSTALLED.
- ◇ EXISTING FENCE TO BE REMOVED AND RELOCATED. ELECTRICAL CONTRACTOR SHALL REMOVE/RELOCATE ANY EXISTING ELECTRICAL TO ALLOW FOR DEMOLITION WORK TO TAKE PLACE.

REVISIONS	BY



PROJECT: **DUCTWORK RECONFIGURATION SALLISAW, OK**

SHEET TITLE: **DEMOLITION PLAN**

DRAWN	MS&A
CHECKED	FE
DATE	12.23.12
SCALE	AS NOTED
JOB NO.	L12269
SHEET	

DEMOLITION PLAN
1/4" = 1'-0"



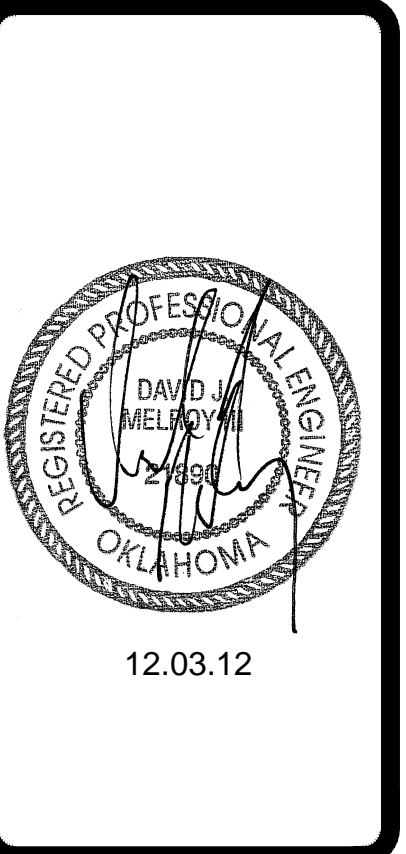
GENERAL CONTRACTOR NOTES:

1. INCLUDE COSTS TO REMOVE FENCE AND RELOCATE TO NEW LOCATION AND PROVIDE NEW FENCE MATERIAL TO MATCH EXISTING FENCE MATERIAL.
2. INCLUDE COSTS FOR DEMOLITION AND REMOVAL OF EXISTING SOG AND CONCRETE WORK AT TRASH ENCLOSURE TO ALLOW FOR NEW CONCRETE TO BE INSTALLED.
3. PROVIDE NEW CONCRETE EXTENSION OF EXISTING TRASH ENCLOSURE CONCRETE PAD. CONCRETE SHALL MATCH EXISTING CONCRETE FOR STRENGTH AND FINISH.
4. INCLUDE COSTS FOR HOUSEKEEPING PAD UNDER NEW HVAC UNIT.
5. INCLUDE COSTS FOR PAINTING AND TOUCH UP TO WALLS WHERE NEW CONSTRUCTION OCCURS.

GENERAL NOTES:

1. ALL CIRCUITS SHALL CARRY A GREEN GROUND CONDUCTOR.
- SHEET NOTES:**
1. CONTRACTOR SHALL REMOVE/REPLACE EXISTING LIGHT FIXTURES FROM DEMOLITION PHASE AND BASED ON NEW MECHANICAL EQUIPMENT/DUCTWORK INSTALLATION.
 2. PROVIDE FUSED DISCONNECT (NEMA 3R) AND FUSES BASED ON EQUIPMENT NAMEPLATE INFORMATION.
 3. TIE INTO CLOSEST 120V OUTLET CIRCUIT.
 4. EXISTING HVAC EQUIPMENT TO REMAIN IN PLACE. PROTECT ELECTRICAL CIRCUITRY DURING CONSTRUCTION PHASE.
 5. PROVIDE 3/4" C FROM UNIT CONTROL PANEL TO IDF ROOM FOR FUTURE DATA CABLE. PROVIDE FULL STRING IN CONDUIT.

REVISIONS	BY



PROJECT: **DUCTWORK RECONFIGURATION SALLISAW, OK**

SHEET TITLE: **POWER AND SIGNAL PLAN**

DRAWN	MS&A
CHECKED	FE
DATE	12.23.12
SCALE	AS NOTED
JOB NO.	L12269
SHEET	

